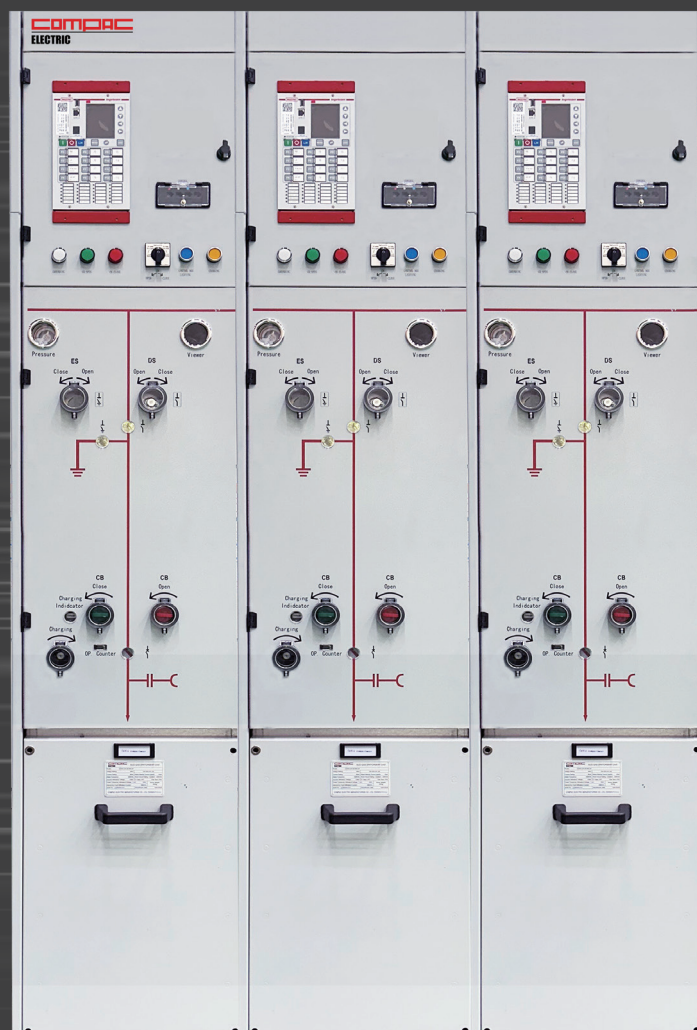


ECO-GAS INSULATION SWITCHGEAR

24KV 20KA 800A



COMPAC
ELECTRIC

Advantage of new COMPAC ECO-GAS Insulation 24KV Switchgear



Dry-Air insulation Technologies

Replace Traditional SF6 Gas to Reach No-Harm to the Earth.



Modular Designed

Easy for Expansion and Installation Safely and Efficiency.



Compact Size

Save a Lot of Spaces, Saving 60 to 80% of Space than MSG Air Switchgear.



Top Flexible Connection

International Standard Link Devices, Easy and Fast. Avoid Vibration Risk and Horizontal Issue.



Flexible Combinations

To Fit Multiple Applications as CB unit, VT unit, LBS unit..



All Optional Possibilities

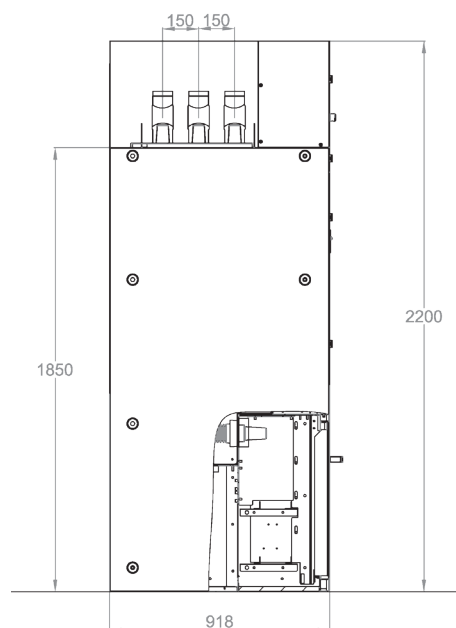
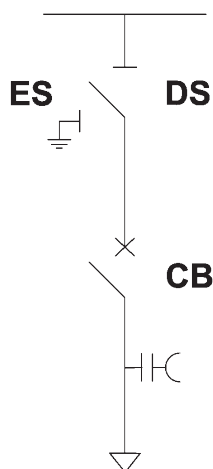
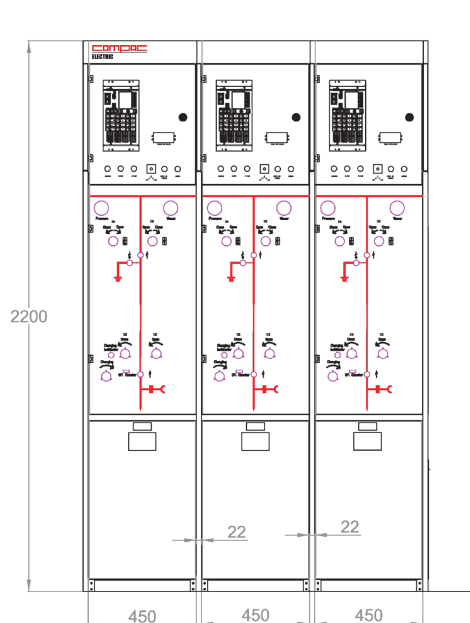
Breaker Status Monitoring System, Protective & Control System under IEC 61850.



International Certification

Certify by STL With IEC 62271-200, IEC 62271-100 & IEC 62271-102.

Dimensions



Environment Conditions



The cubicles must be stored and installed in a dry area free from dust and with limited temperature variations.

For stocking : -40 °C ~ +80 °C

For working : -25 °C ~ +40 °C



Altitude for installation : under 2500m



Relative humidity : max. 95 %

Optional Components

CT(Current transformer)

Ratio	Acc. Class	Burden(VA)
800A/5A	5P10	5
400A/5A	5P10	5
200A/5A	5P10	5
100A/5A	5P10	2.5

VT(Voltage transformer)

Pri. Voltage(kV)	Sec. Voltage(V)	Acc. Class	Burden(VA)
22-11	110	0.5	100/25
22.8-11.4	114	1.0	200/50
24-12	120	3.0	300/75

Structural Design



Vacuum Circuit Breaker/Load Switch

Adopts a three-phase integrated structure

"3-in-1" integrated design of circuit breaker, disconnecting switch and earthing switch functions, compact in size and taking up less space

Features:

1. Vacuum interrupter
2. Mature and stable transmission structure
3. Phase distance 150mm
4. Environmentally friendly material insulated rack
5. The mechanism can provide opening/closing auxiliary position contacts

Greater Reliability and Security

The conductive part of the main circuit is sealed from dry air, and the high-voltage live conductor is sealed from the external environment.

The influence of changing conditions can be used in places with harsh environments to ensure long-term safe operation of the equipment with high reliable and no risk of electric shock or fire. It has good air tightness and can last up to 30 years without air replenishment.

Technical Data

CEMC-EA-24-800-20

Rated voltage		Ur	kV	24
Rated frequency		Fr	Hz	50 / 60
Insulation level				
Industrial frequency 60Hz / 1min	Phase-to-phase,	Ud	kV rms	50
	phase-to-earth			
	Across isolating distance	Ud	kV rms	60
Lightning impulse withstand	Phase-to-phase,	Up	kV peak	125
	phase-to-earth			
	Across isolating distance	Up	kV peak	145
Rated current		Ir	A	800
Rated peak current		Ip	kA	50
Tank internal arc withstand		IAC	AFLR	20kA / 1s
External arc withstand				
Short-time withstand current				20kA / 3s
Operating sequence			0 - 0.3s - CO - 3min - CO	
Circuit breaker	Mechanical endurance	M2	Class	10000 ops
	Electrical endurance	E2	Class	25 ops
	Capacitive switching	C2	Class	
	Switching of cable systems	S1	Class	
Three position switch-disconnector (DS+ES)	Mechanical endurance	M1	Class	2000 ops
	Electrical endurance	E1	Class	2 ops
Degree of protection	Tank			IP67
	External enclosure			IP41